

# Storage and Logistics

- [Year Round Storage](#)
- [Turtle Truck](#)

# Year Round Storage

Future Turtles camp gear is stored in six places:

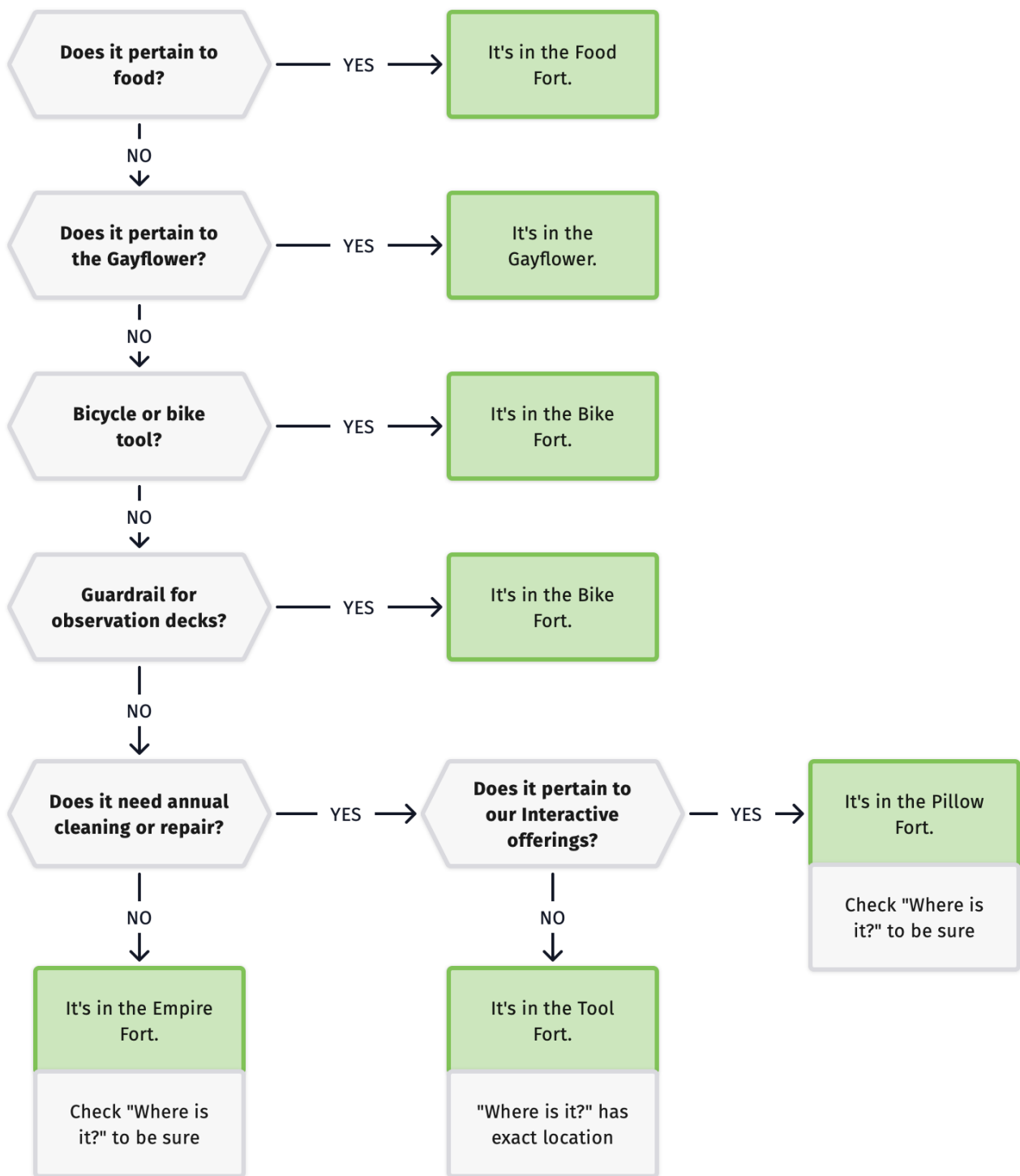
Name	Description	Contents	Location*
Tool Fort	20' Shipping Container	Tools, Utility lighting, Electrical, ShiftPods, Supplies	A
Bike Fort	20' Shipping Container	Bikes and bike tools, container deck guard rails	A
Pillow Fort	24' Bumper-pull Trailer	Interactivity equipment, rugs, audio gear, DJ lighting, pillows	A
Food Fort	24' Bumper-pull Trailer with commercial kitchen	Cooking equipment	B
Empire Fort	25' Pup Trailer (high deck, like a mini-semi trailer)	Shade parts, camp furniture, extension cord	C
Gayflower	53' semi trailer	Water, Grey Water, and Black Water tanks, showers and bathrooms, plumbing equipment	C

\*[Location Details](#)

## Where is it?

This flowchart shows how we decide where to store most things.

The detailed [Where Is It?](#) spreadsheet helps you track down exact locations down to shelf and bin, especially of specific tools and items in the Tool Fort.



# Camp Supplies

What we call "supplies" are anything consumable that we stock up on before each burn to have on hand: things like batteries, towels, cleaning supplies, and so forth. This does **not** include anything used by the food team.

- Google Sheets: [Camp Supplies](#)

# Turtle Truck

We rent a truck in San Francisco to make camp possible.

- It brings bulky camper stuff from San Francisco to and from playa, such as tents, bikes, and black-and-yellow bins. In 2024 we rented a 16' box truck which was not too full so we have not had to institute official limits on what you can and can't bring.
- It makes a stop in Reno for people getting on and off there.
- It takes out camp trash which includes build team trash and kitchen trash, but no camper trash (campers are responsible for their own moop).

Here's a typical schedule based on 2024:

## **Friday before the event:**

- **early morning** - Pick up truck from rental company
- **11:00 am** - Load truck in San Francisco
- **Afternoon** - Travel to Reno

## **Saturday before the event:**

- **1pm** - Load in Reno (at GSR or wherever the Turtle Bus will be)
- **Afternoon** - Travel to Playa

## **Monday After Temple Burn:**

- **Morning** - load bus on Playa
- **11am** - depart for Reno
- **Afternoon** - arrive in Reno

## **Tuesday (day after Labor Day)**

- **Morning** - take trash to Reno transfer station

## **Wednesday**

- **Morning** - drive to San Francisco
- Unload freight in San Francisco (first chance for campers to pick up their stuff)
- Get truck washed
- Return to rental agency
- **Evening** - campers can pick up their own stuff if they missed the first chance

# Truck Rental Companies

These two companies are reliable and happy to rent to Burners. However they have limited availability so you have to make a reservation in March or April.

[Hengehold Trucks](#)

[Doherty's Truck & Auto Rental](#)